

A green megaphone is positioned diagonally from the bottom left towards the top right. The background is a solid, vibrant green. The megaphone has a textured, slightly grainy surface.

# televic

education

Global leader in education technology innovations  
& solutions

What's in it for you?

*Tell me, I will forget.  
Show me, I will remember.  
Involve me, I will understand.*

*Confucius(551 before.Chr.)*

# Challenges? Opportunities?

Accreditation  
Compliance

More insights  
(reporting)

Self learning  
Self assessment  
(choice)

Motivation  
(engagement)

Knowledge  
management

Better integration  
of new employees/  
teachers

More effective  
training

More sales

Optimalisation of  
the "learning cost"  
(cost reduction)

Better quality  
(customer  
satisfaction)

Collaborative  
learning

Higher learning  
impact

# Investing in learning & development

COACHINGS

CLASSROOM TRAINING

GAMIFICATION

ON-THE-JOB TRAINING

SELF-ASSESSMENT

E-LEARNING

COMPUTER-BASED  
LEARNING

PEER-TO-PEER LEARNING

...

You don't want the CEO to think like this about training budgets...



# Increasing your corporate IQ



81%

of new knowledge  
is lost after 30 days



The current level of  
knowledge about topic X is often a

**BLACK BOX**



Knowledge building

&

Knowledge testing

Knowledge measuring

# Increasing your corporate IQ



**Edumatic**

Quantifying knowledge. ✓



Knowledge building

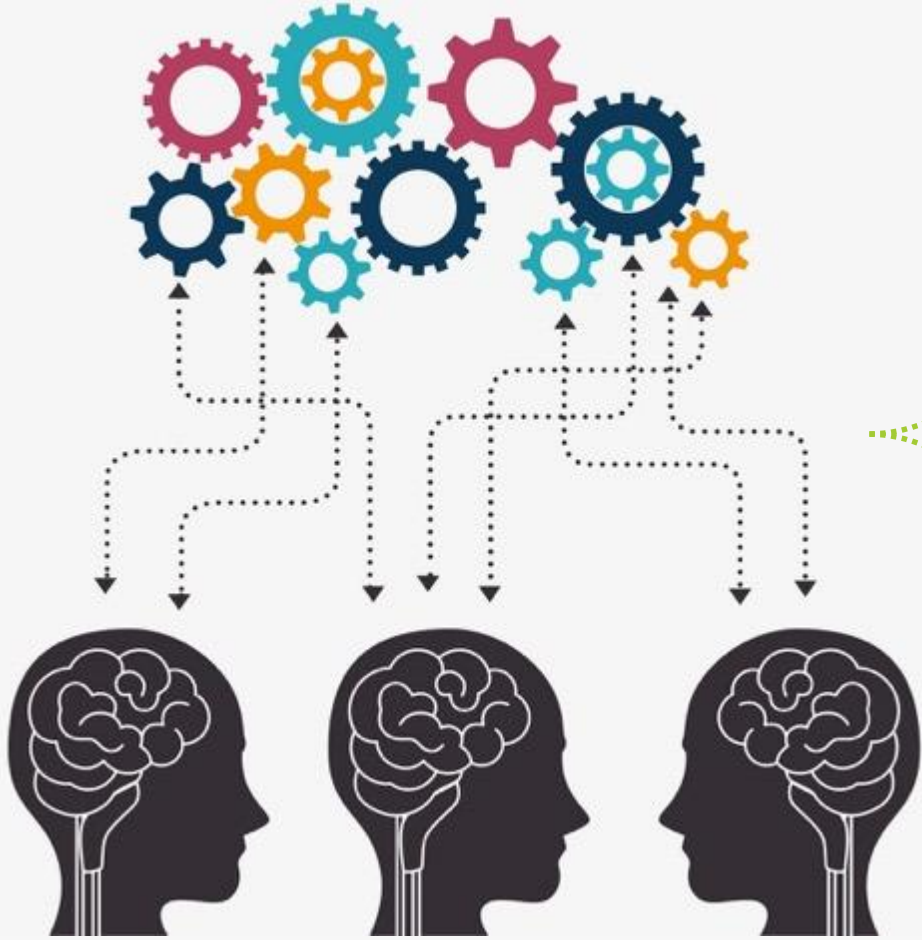
&

Knowledge testing

Knowledge measuring

Edumatic is an interactive tool for building & testing and measuring knowledge

# Edumatic



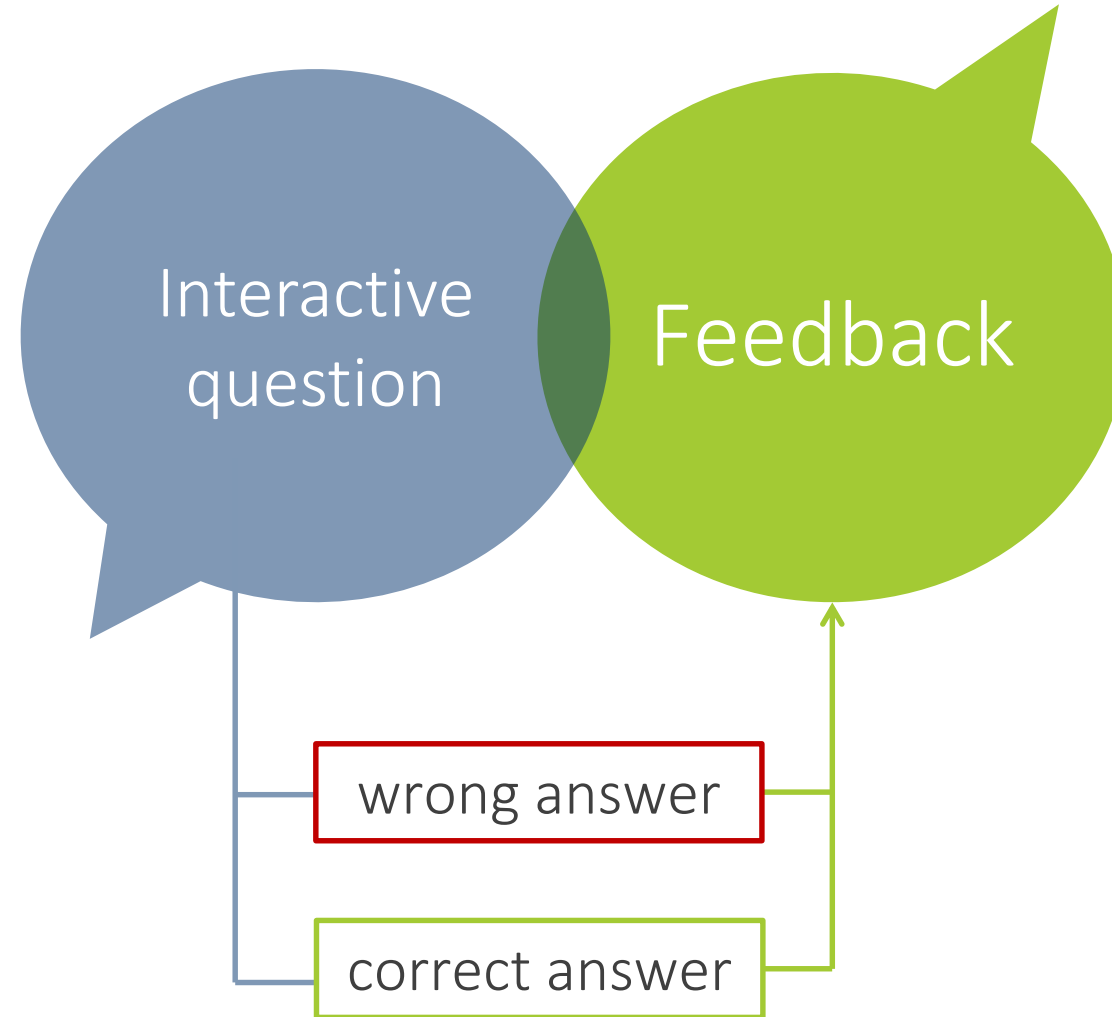
Making exercises

Interactive question(s)

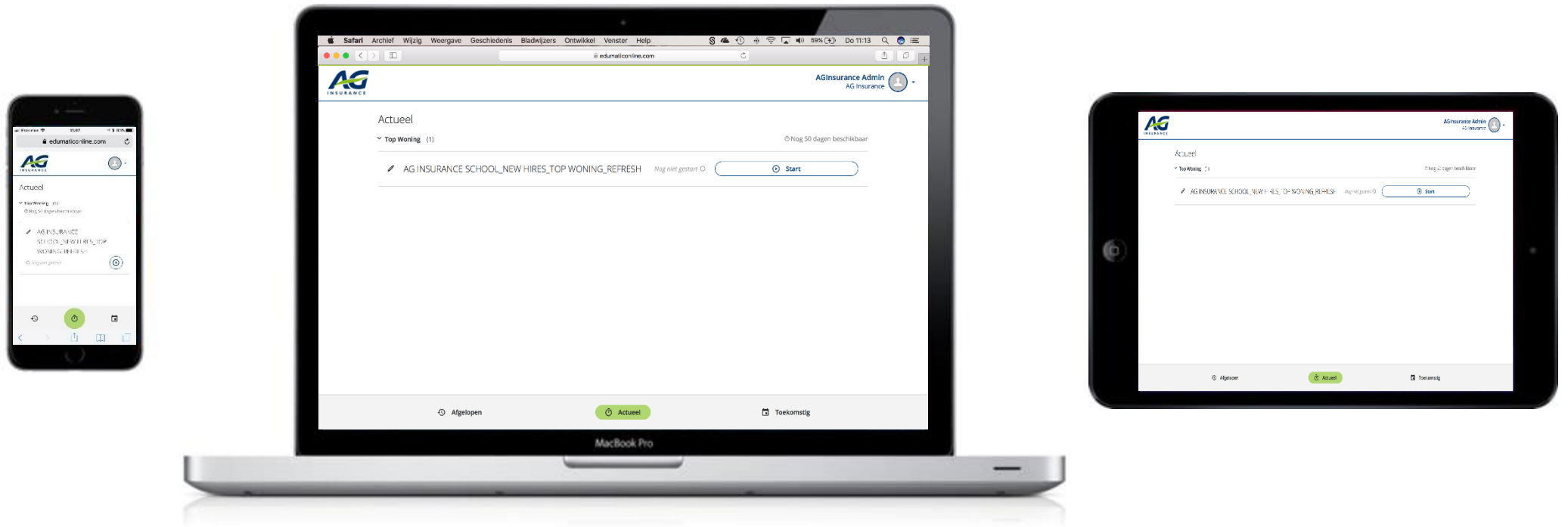
Doing a test



# Interactive question & error specific feedback



# Multi-device



# Usable for...

ONBOARDING  
RECRUITING

PROCESSES  
PROCEDURES

SECURITY

LANGUAGE

TECHNICAL  
INDUSTRIAL

MEDICAL

AGRI-FOOD

CHEMICAL

SALES  
PRODUCT

SOFT SKILLS

EQUIPMENT  
/SOFTWARE

...

# Learning content (1/3)

(+) = basic version + long version

 Patient Veiligheid	 Medicatie	 Training & vorming personeel	 Toegang tot zorg	 Kwaliteit en veiligheid
Handhygiene (+)	Med. bewaren	Functie omschrijving	Identificatie	Incidenten melden
Valpreventie (+)	Med. thuisbeheer	Werkverhouding	Praktische regelingen	ICM systeem
Identificatie	Bereidingen	Werkwagen	Ontslag	Ernst van incidenten
Veiligheid	Med. toedienen	Onderhouder		VMS-overleg
Read-back	Medicatie beheren	Medewerkers	Reanimatie	Kwaliteit algemeen
Isolatie	ICM + voorkomen	Opleidingen	EPILS (pediatrie)	Tracers
Medicatie	Hoog risico medicatie	Gezondheidszorg	Algemene	Lean-project
Operatie		Beschermings-programma		

# Learning content (2/3)

(+) = basic version + long version



Patiënt onderzoek labo

Correct staal

Transport van stalen

Rapportage

Staal name

Informatie vinden



Patiënt onderzoek alg.

Evaluatie

Herevaluatie

Coördinatie

Medische beeldvorming

Pijn



Anesthesie &  
chirurgische zorgen

Sedatie

Pre-sedatie evaluatie

Veiligheid

Chirurgie

Pre-opdossier



Patiënten recht

Algemeen

Beroepsgeheim

Rechten

Ombudsdienst

Informed consent



Communicatie en  
educatie voor patiënten

Huisstijl

Communicatie

Informatie

Patiënten zorg






Uniforme zorg

Fixatie

Documentatie

# Learning content (3/3)

(+) = basic version + long version

				
Infecties	Medicatie	Leiderschap	Faciliteiten	Informatie hantering
Team ziekenhuishygiëne	Med. bewaren	Under construction	Algemeen	Documenten beheer
Voorzorgsmaat-regelen	Med. thuisbeheer		Gevaarlijke stoffen	Infomap
Werkpakken	Bereidingen	Leiderschap	Medische toestellen	Divers
MRSA-Screening (+)	Med. toedienen	Radioprotectie	Brand (+)	Dialyse
Isolatie	Medicatie beheren	Bloedtransfusie	Noodplanning	Injecties
Schoonmaken	ICM + voorkomen	Algemene wondzorg	Medisch afval	Nucleaire geneeskunde
Evaluatie		Allergenen		Roche Accu Check
Under construction				InterAxio

# Edumatic

Learning impact

Learning output

Learning cost optimisation



# televic

Providers of reliable interaction

Bart Sagaert – [b.sagaert@televic.com](mailto:b.sagaert@televic.com) - +32 474 75 31 51